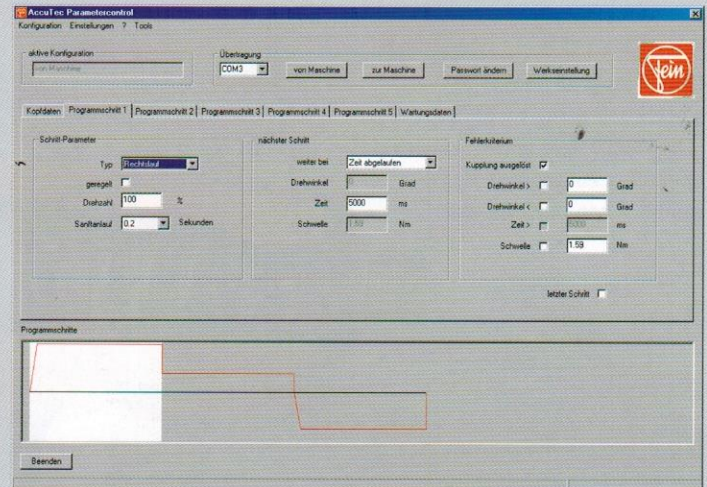
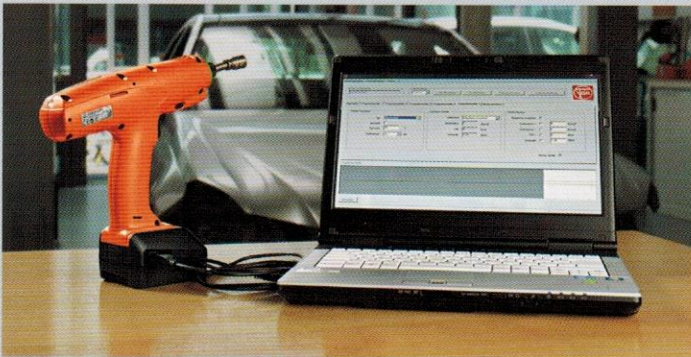


**FEIN benefits**

- ▶ No loss of speed when screwdriving in the individual levels thanks to sensor control.
- ▶ Freely programmable parameters: speed, direction of rotation, angle of rotation, torque, threshold, time.
- ▶ Recording of the screw connection made and calibration data takes place in the maintenance module.
- ▶ Precise adaptation to the specific screwdriving application through individual programming.
- ▶ The parameters can be individually set in up to 5 programme steps.
- ▶ 100 % process-optimized. Error criteria settings prevent manipulation of the screwdriving process.
- ▶ Secure machine programming via an integrated interface and the included software.
- ▶ Protection of the machine from unauthorized access through a factory-installed password.

**FEIN ParameterControl software**



**Individual programming in a few steps:**

- ▶ Easy input of necessary data at the computer.
- ▶ Transfer via an interface integrated into the screwdriver.
- ▶ Storage of the data on the computer for later reuse. For example, when exchanging machines.

**Programmable FEIN AccuTEC screwdrivers up to 30 Nm (14.4 V – Li-ion)**

Model		ASM 14-6 PC	ASM 14-9 PC	ASM 14-12 PC	ASW 14-6 PC	ASW 14-10 PC	ASW 14-14 PC	ASW 14-30 PC
Torque range	Nm (in/lbs)	1.2–6 (10–54)	2–9 (17–80)	3–12 (26–106)	1.5–6 (13–54)	2–10 (17–89)	3–14 (26–124)	12–30 (106–266)
Idling speed	rpm	50–1,000	50–750	50–750	50–700	50–700	50–530	20–260
Voltage	V	14.4	14.4	14.4	14.4	14.4	14.4	14.4
Weight including battery and angled head (according to EPTA)	kg (lbs)	1.3 (2.8)	1.3 (2.8)	1.3 (2.8)	1.4 (3)	1.4 (3)	1.4 (3)	2.0 (4.4)
Tool mounting	in	1/4"	1/4"	1/4"	–	–	–	3/8"-square head
<b>Order number</b>		<b>7 112 54 00 95 0</b>	<b>7 112 55 00 95 0</b>	<b>7 112 56 00 95 0</b>	<b>7 112 50 00 95 0</b>	<b>7 112 51 00 95 0</b>	<b>7 112 52 00 95 0</b>	<b>7 112 53 00 95 0</b>

Supplied without battery, charger or angled head.  
ASW 14-30 PC supplied without battery, or charger, with angled head.